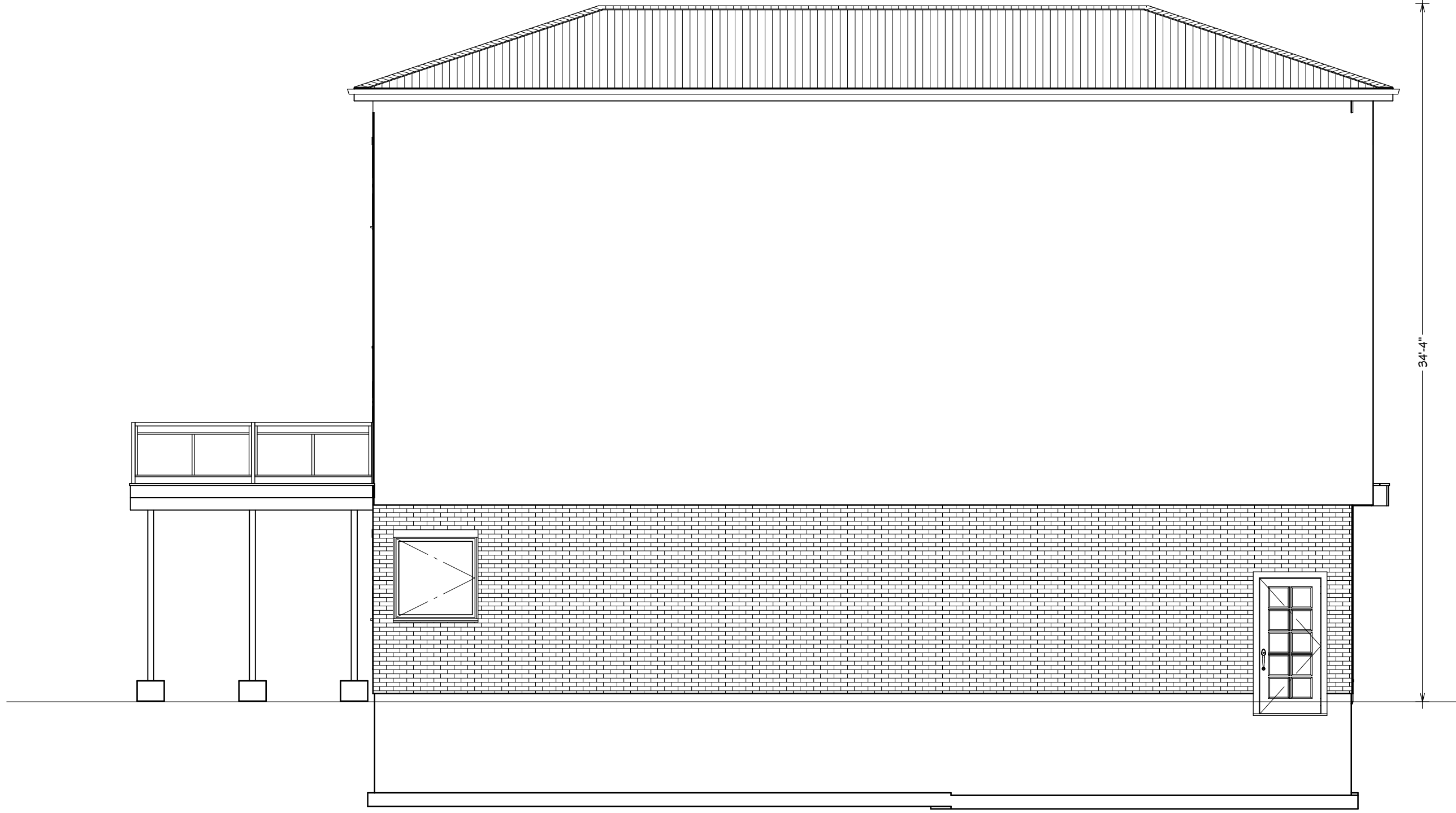


34'-6"

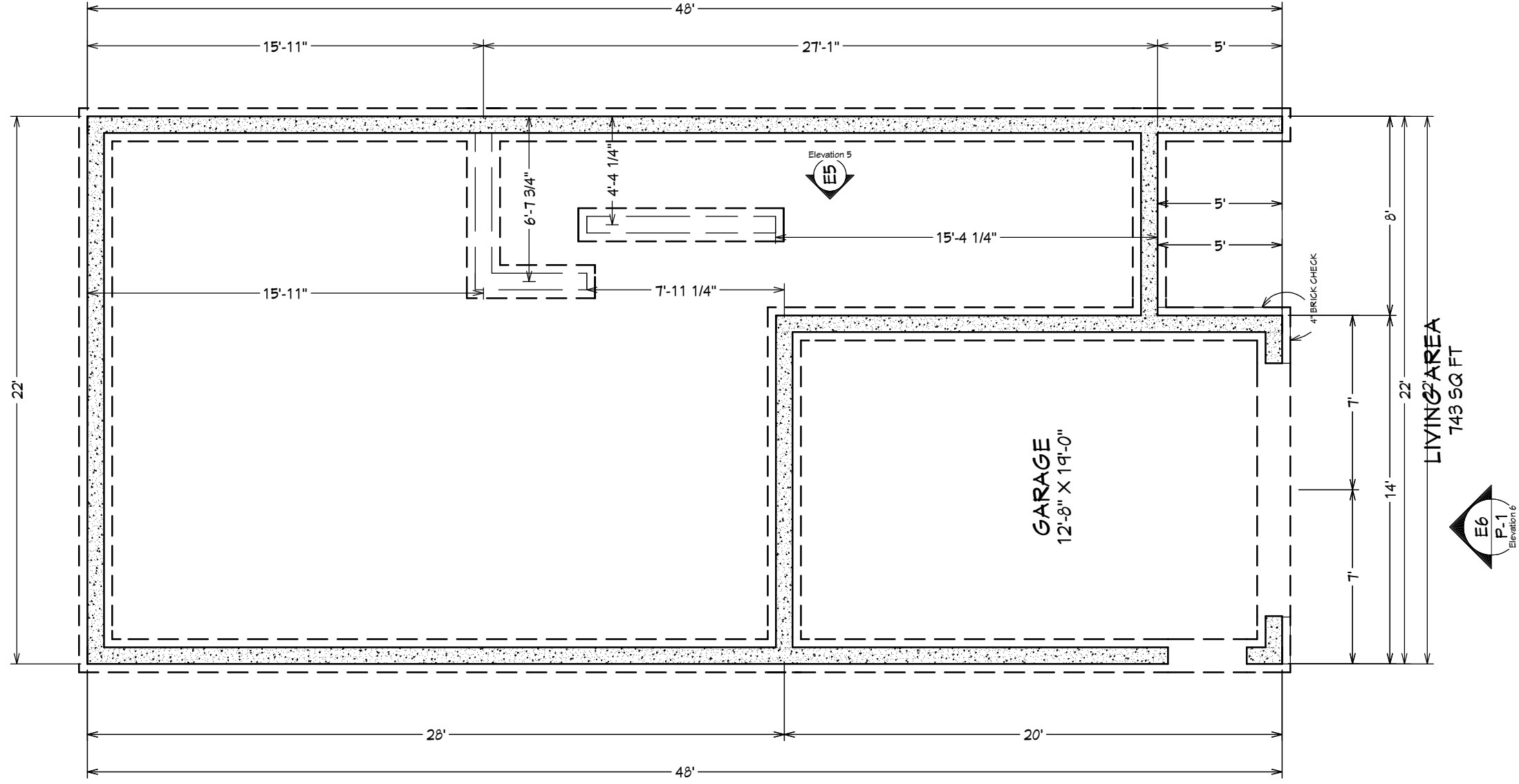
DECK BUILD INFO.  
 42" Min. Railing Height  
 MULTIPLE OF 2X10 BEAMS  
 SET TO CODE STANDARD BASED  
 ON SUPPORT AND SPAN NEEDS.  
 2X10 JOISTS SET AT 16" OC  
 OR EQUIVALANTS  
 TO CODE STANDARD.  
 Lumber used for joists, trusses,  
 rafters and beams shall  
 be identified by a grade stamp  
 to indicate its grade as  
 determined by the Standards  
 Grading Rules for Canadian Lumber.

6X8 POST ON 12" CONC. PILE  
 CAN BE 8'0" FT. OR ON  
 EXTENDED PIS. 4'-0" BELOW GRADE  
 (LOCATION(S) DETERMINED ONSITE)

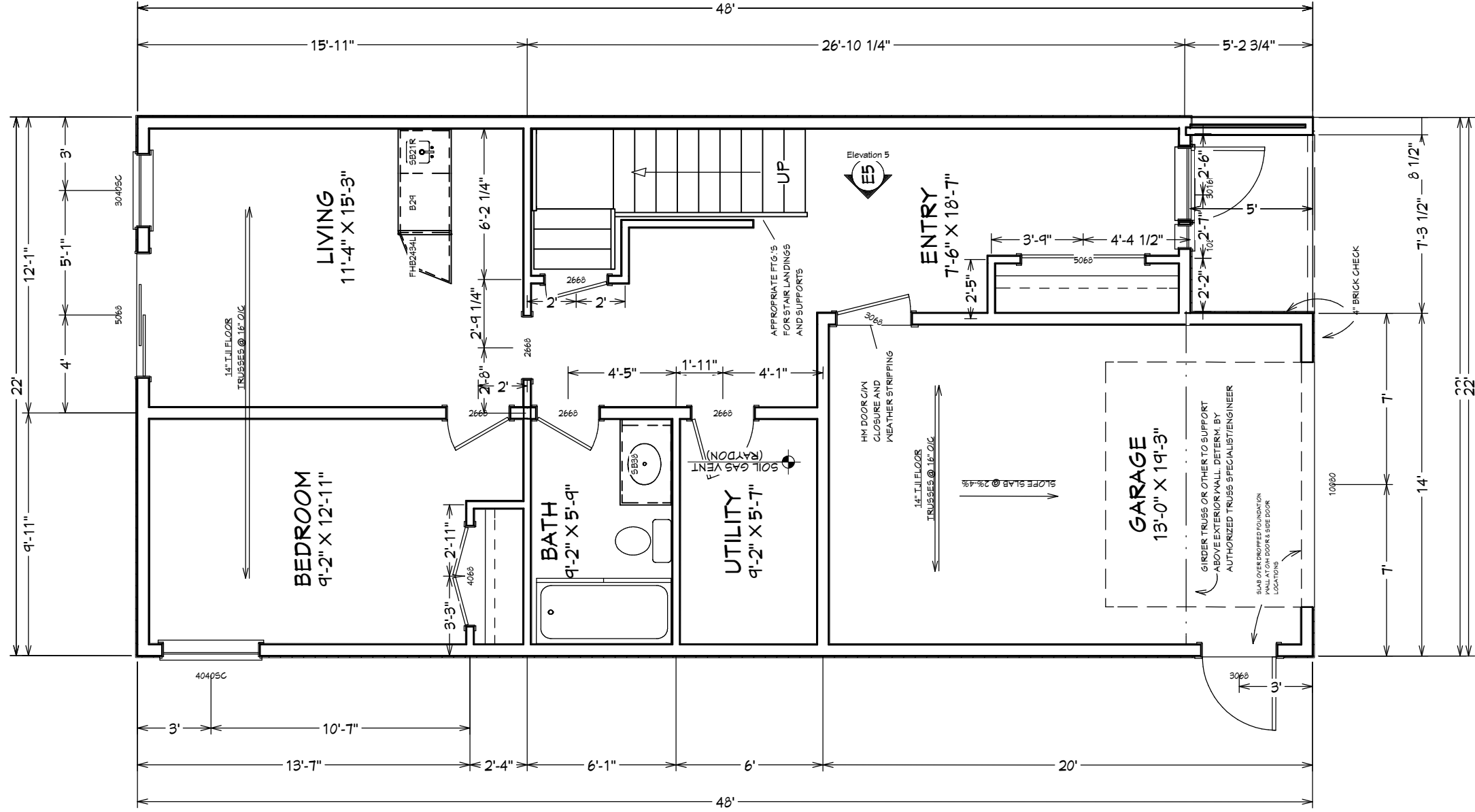
Minimum 4" below grade



Elevation 7  
E7



Elevation 7  
E7

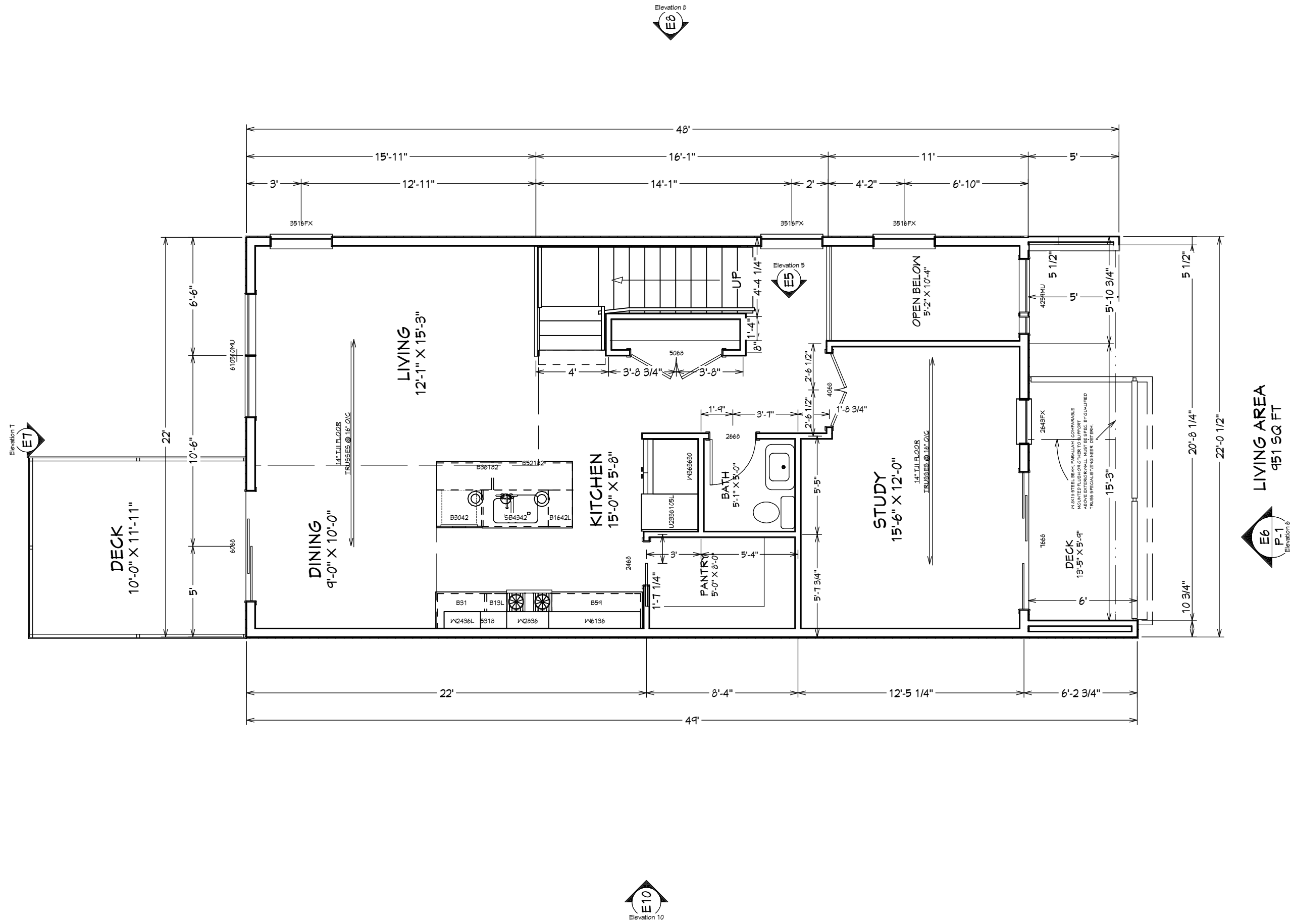


E6  
P-1  
Elevation 6

LIVING AREA  
711 SQFT

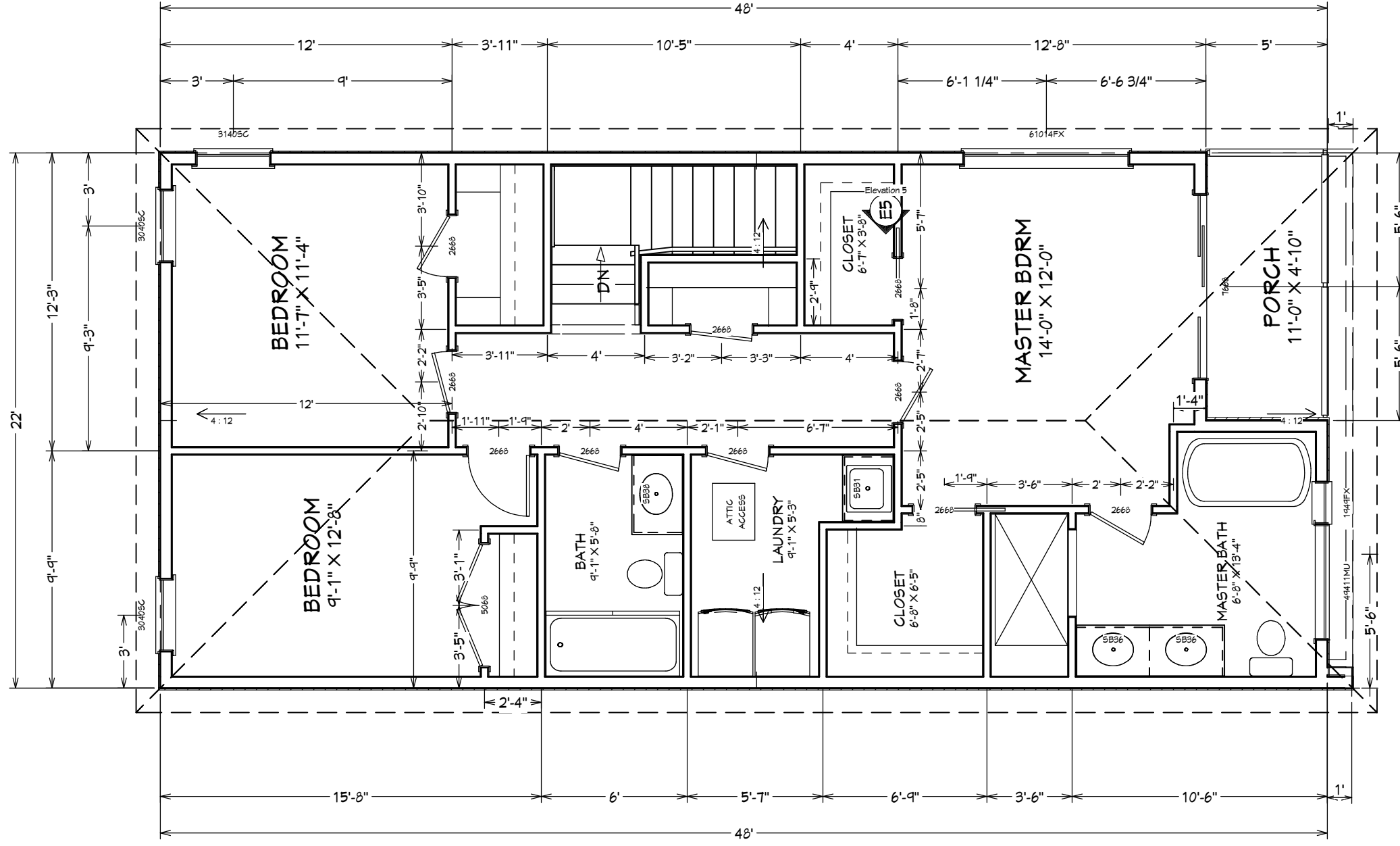
Elevation 8  
E8

E10  
Elevation 10



**LIVING AREA**  
951 SQ FT

Elevation T  
E7



E10  
Elevation 10

E8  
Elevation 8

LIVING AREA  
948 SQ FT  
E6  
P.1  
Elevation 6

8	FEB 2017	SCALE: 3/16" = 1'	LONG LAKE 1	THIRD FLOOR	FOERSTERDESIGN NEXT GENERATION HOME PLANS
---	----------	----------------------	-------------	-------------	--



